



1

OUTSIDE LONDON

BATH GRAY MCA *Until 30 Nov. Wed-Sat 10-4.* Style sheets: a gallery dedicated to original fashion illustration opens with work by masters of the genre René Gruau and Antonio Lopez.

VICTORIA ART GALLERY *Until 25 Nov. Mon-Sun 10.30-5.* More of the art and design of Clifford and Rosemary Ellis (see Eight Holland Street, London), including posters for Shell and BP, Collins's *New Naturalists* book covers, and watercolours recording the Bath Blitz. *Plus*, paintings by Victorian traveller Adela Breton.

BRUTON HAUSER & WIRTH SOMERSET *Until 1 Jan. Tues-Sun 10-5 (until 31 Oct), 10-4 (from 1 Nov).* Cover art: Berline de Bruyckere, known for disconcertingly corporeal sculptures, presents new, more abstract work made of layers of decomposing blankets. *Plus*, having viewed blood samples under a microscope, Gutai artist Takesada Matsutani began to incorporate the blob as a motif in his vinyl-glue paintings, prints and assemblages.

BUTE MOUNT STUART *Until 18 Nov. Mon-Sun 11.30-3.30 (until 28 Oct), Mon-Fri 12-2 (from 29 Oct), guided tours on the hour only.* Christine Borland's fragile installations of shattered crockery and hand-blown glass balls respond to the Neo-Gothic mansion's past as a wartime naval hospital.

CAMBRIDGE MUSEUM OF CLASSICAL ARCHAEOLOGY *Until 3 Nov. Mon-Fri 10-5, Sat 10-1.* Due process: on show in the cast gallery here, Florian Roithmayr's new works were inspired by the making and materials of sculpture, borrowing their form from moulds and armatures.

CHICHESTER PALLANT HOUSE GALLERY *Until 3 Feb. Tues, Wed, Fri, Sat 10-5, Thurs 10-8, Sun 11-5.* Dynamic paintings, posters and textiles by Berlin-born Karl Hagedorn (1889-1969), influenced by Severini, Picasso and his hero Matisse (he kept until his dying day the butt of a cigarette Matisse had shared with him). *Until 10 Feb*, the life and art of Julian Trevelyan, a Surrealist and traveller ultimately anchored by his beloved studio on the Thames.

EASTBOURNE EMMA MASON PRINTS *Until 3 Nov. Thurs-Sat 10-5.* Domestic objects, Soho life and travels abroad figure in the prints of the Great Bardfield-moulded artist Chloe Cheese.

GLASGOW A-M-G5 *Until 3 Nov. Fri, Sat 12-6.* This new gallery shows just one work by a single artist. First up is Merlin James's painting of the Clyde: the view from his house, made from memory.

LEICESTER ATTENBOROUGH ARTS CENTRE *Until 16 Dec. Tues-Fri 12-6, Sat 10-5, Sun 12-4.* No frills?

A century after Adolf Loos wrote his famous essay rejecting ornamentation as a kind of crime, Yinka Shonibare MBE curates an Arts Council touring exhibition unpicking the place of pattern in art, with work by minimalists and embellishers alike.



7

LLANDUDNO MOSTYN *Until 4 Nov. Tues-Sun 10.30-4.* Phyllida Barlow, the Boyle Family, Gavin Turk and some 40 others ask you to look anew at familiar things – a plug socket, a broom, a bench – in a show of works drawn from the David Roberts Art Foundation.

MELROSE ABBOTSFORD *Until 30 Nov. Mon-Sun 10-5 (until 31 Oct), 10-4 (1-30 Nov).* Turner's specs, palette and the sketchbook he filled while staying here in 1831 travel north for an exhibition about his (often frosty) relationship with this house's proprietor, Walter Scott.

NEWCASTLE UPON TYNE LAING ART GALLERY *27 Oct-3 March. Tues-Sat 10-5, Sun 2-5.* Bare essentials: paintings and photographs of naked sitters, from Nell Gwyn to Naomi Campbell.

NEWTOWN ORIEL DAVIES *Until 7 Nov. Mon-Sat 10-5.* The rite stuff: witches in contemporary art.

NORWICH SAINSBURY CENTRE FOR VISUAL ARTS *13 Oct-24 Feb. Tues-Fri 10-6, Sat, Sun 10-5.* Sculptor Elisabeth Frink's close observation of animals – including humans, in all their aggression, vulnerability and spirituality.

NOTTINGHAM NEW ART EXCHANGE *Until 16 Dec. Mon-Fri 9-6, Sat 10-5, Sun 10-4.* Ekow Eshun curates a show of photography from 11 African countries, with a special focus on the city.

SHEFFIELD WESTON PARK MUSEUM *Until 4 Nov. Mon-Sat, bank hols 10-5, Sun 11-4.* Degas's *Miss La La at the Cirque Fernando* (1879) will have you ooh-ing and aah-ing at a lively show of circus art, costumes, posters and photographs.

FRANCE PARIS MUSEE MARMOTTAN MONET *Until 10 Feb. Tues, Wed, Fri-Sun 10-6, Thurs 10-9.* Buried treasure: dazzling Impressionist, Nabis and Fauvist pictures from private collections.

INDIA JAIPUR JAWAHAR KALA KENDRA *Until 18 Nov. Mon-Sun 9.30-6.* The inaugural Indian Ceramics Triennale is staged in this Charles Correa-designed space. Juree Kim constructs miniature clay buildings then sits them in water until they subside; Asim Paul's fenced-off stoneware towers comment on partition.

ITALY PALERMO MANIFESTA 12 *Until 4 Nov. Tues-Sun 10-8.* The nomadic biennial has placed work by 50 artists in venues including the 1789 botanical garden, a historic citrus grove and an abandoned housing development.

USA NASHVILLE FRIST ART MUSEUM *12 Oct-6 Jan. Mon-Wed 10-5.30, Thurs, Fri 10-9, Sat 10-5.30, Sun 1-5.30.* The art of the Parisian Belle Epoque.

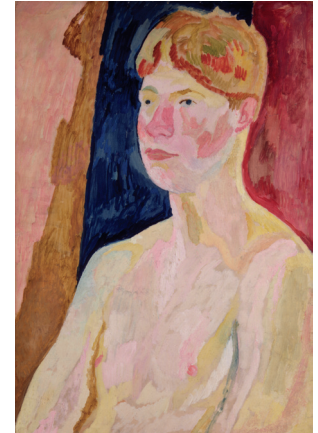
NEW YORK GERALD BLAND *232 EAST 59TH ST 23 Oct-30 Nov. Mon-Fri 9-5.* Pierre Bergian's paintings of 'half-imagined' empty rooms, themselves containing views of other rooms or classical ruins.

THE MET FIFTH AVENUE *Until 12 Nov. Mon-Thurs, Sun 10-5.30, Fri, Sat 10-9.* Karen B. Cohen's collection of Delacroix drawings. *Until 6 Jan, encore* Delacroix: a sumptuous survey, on tour from the Louvre ■

1 Fighting spirit – Elisabeth Frink, *Riace Warriors* (detail), 1986-89, in Norwich.

2 Chest register – Vanessa Bell, *David Garnett*, 1915, in Newcastle.

3 Speed the plough – Karl Hagedorn, *Australia*, undated, in Chichester. 4 Put another shell on the barbie – Bedwyr Williams, *The Burn*, 2012, in Leicester.



2



3



4



5



6

5 Double vision – Lebohang Kganye, *Ka 2-phisi yaka e pinky II*, 2013, in Nottingham.

6 Whatever floats your boat – Gustave Caillebotte, *The Bank of the River Seine at Petit Gennevilliers*, 1890, in Paris.

7 Hair-raiser – Eugène-Samuel Grasset, Paul Vever and Henri Vever, 'Assyrian' comb, 1900, in Nashville